



Beaver Hills
BIOSPHERE

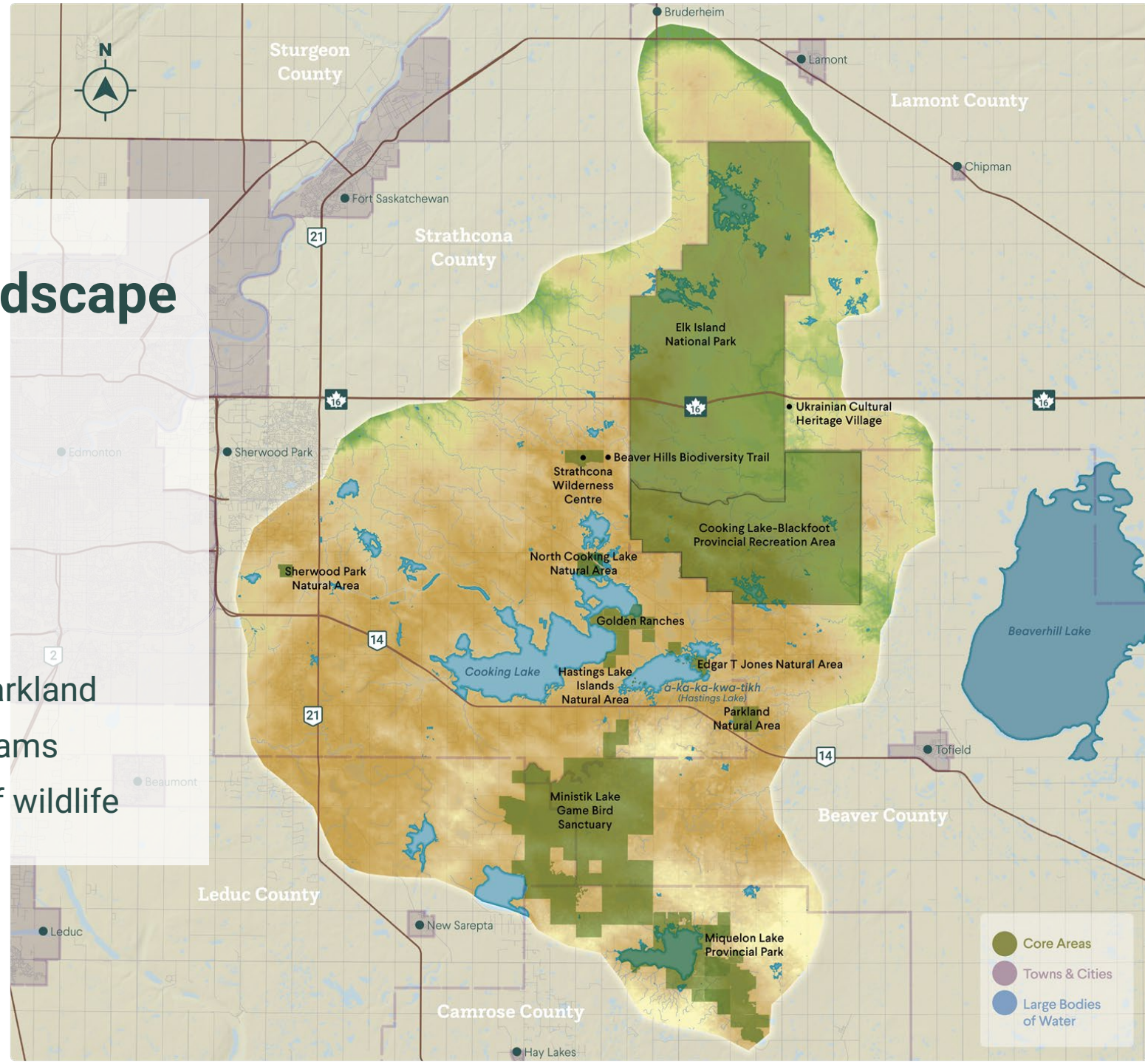
Partner Presentation: Leduc County

A Learning Place for Sustainable Development

April 2, 2024

An Unmistakable Alberta Landscape

- Beaver Hills/Cooking-Lake Moraine
- Hummocky “knob and kettle” terrain
- 1572 square kilometres (607 square miles)
- ~50 metres above sea level
- Island of boreal mixedwood forest
- Precipitation ~20% more than surrounding parkland
- Abundance of wetlands, small lakes and streams
- Home to 13,000+ people and 300+ species of wildlife



The Origins of the Biosphere

The Setting

- A unique region, rich in biodiversity and landscape character

The Catalyst

- Increasing urban pressures and a proposed development in proximity to Elk Island National Park in 2000

The Need

- A collaborative, proactive and long-term approach to sustainable land-use planning and management within the Beaver Hills

The Outcome

- Stakeholder workshop results in formation of [Beaver Hills Initiative](#) in 2002

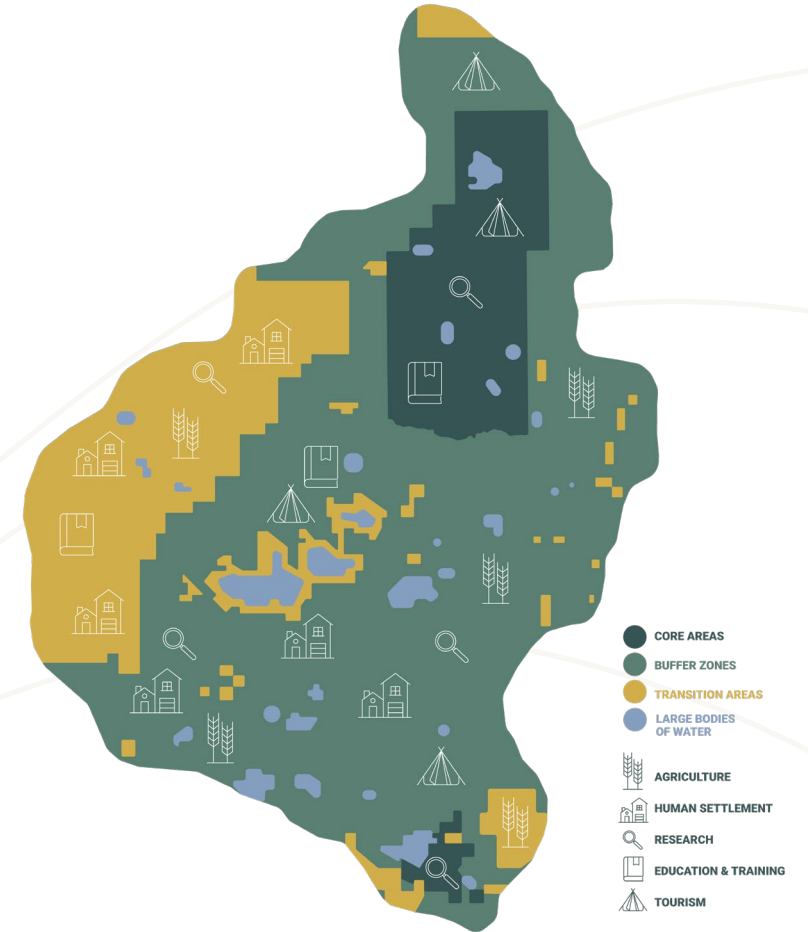


The Next Chapter

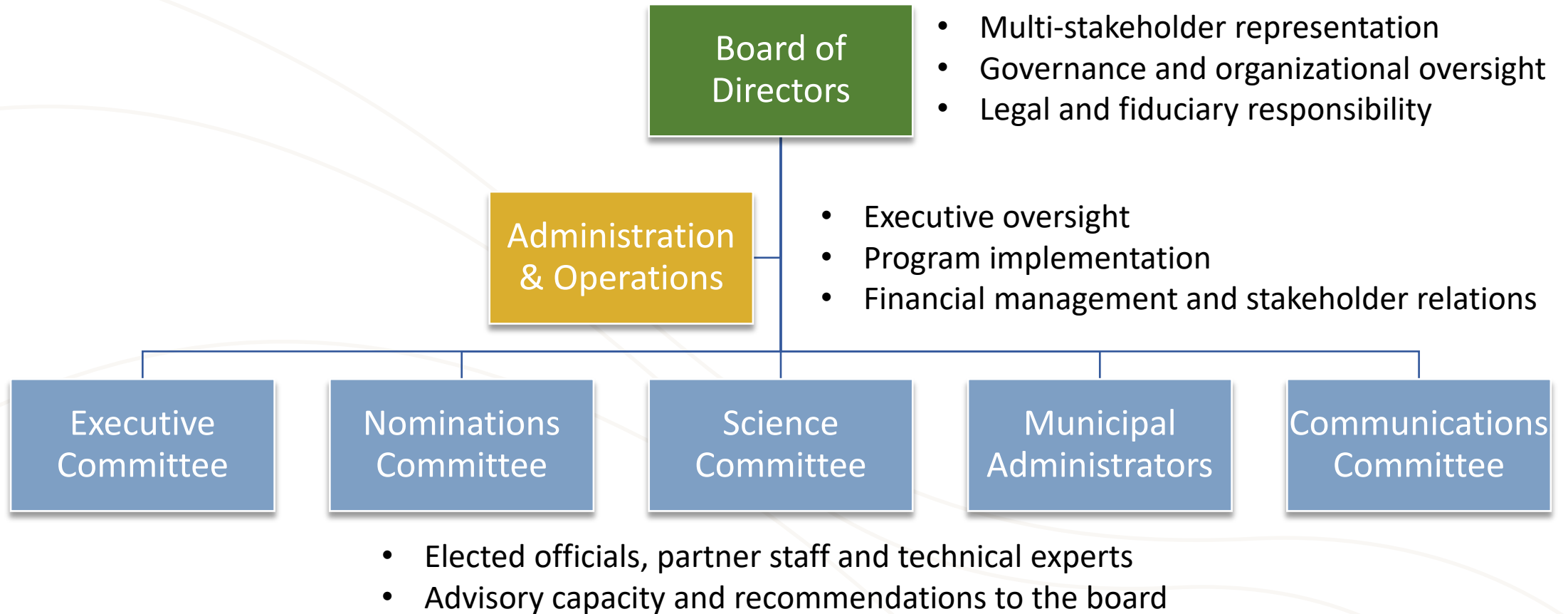
- UNESCO Biosphere designation March 19, 2016
- Global recognition of the commitment of regional partners
- World Network of Biospheres
 - 738 biospheres in 134 countries, including 22 transboundary sites
- Canadian Biosphere Regions Association
 - A network of 19 biospheres
- Alberta
 - 2 biospheres; Waterton, Beaver Hills

What is a Biosphere?

- UNESCO designated areas
- Regions in which people live and work in harmony with nature
- Places that provide local solutions to global challenges
- Collaborative planning and management efforts that focus on:
 - Conservation of biodiversity and cultural diversity
 - Economic development that is culturally and environmentally sustainable
 - Logistical support, underpinning development through research, monitoring, education and training



Guiding the Ship



Mitigating the Impacts

A few of our initiatives that are making a difference

Projects With Impact

Leduc County FireSmart Plan 2018

- Wildfire Hazards and Risk Assessment
 - Values at risk
 - Community risk assessment
 - Wildfire behaviour potential
 - Wildfire incidence
 - Firefighting capabilities
- Wildfire Mitigation Strategies
 - Education, development, vegetation management
 - Legislation, inter-agency cooperation, cross-training
 - Emergency planning



Wildfire Hazard and Risk Assessment and Wildfire Mitigation Strategies

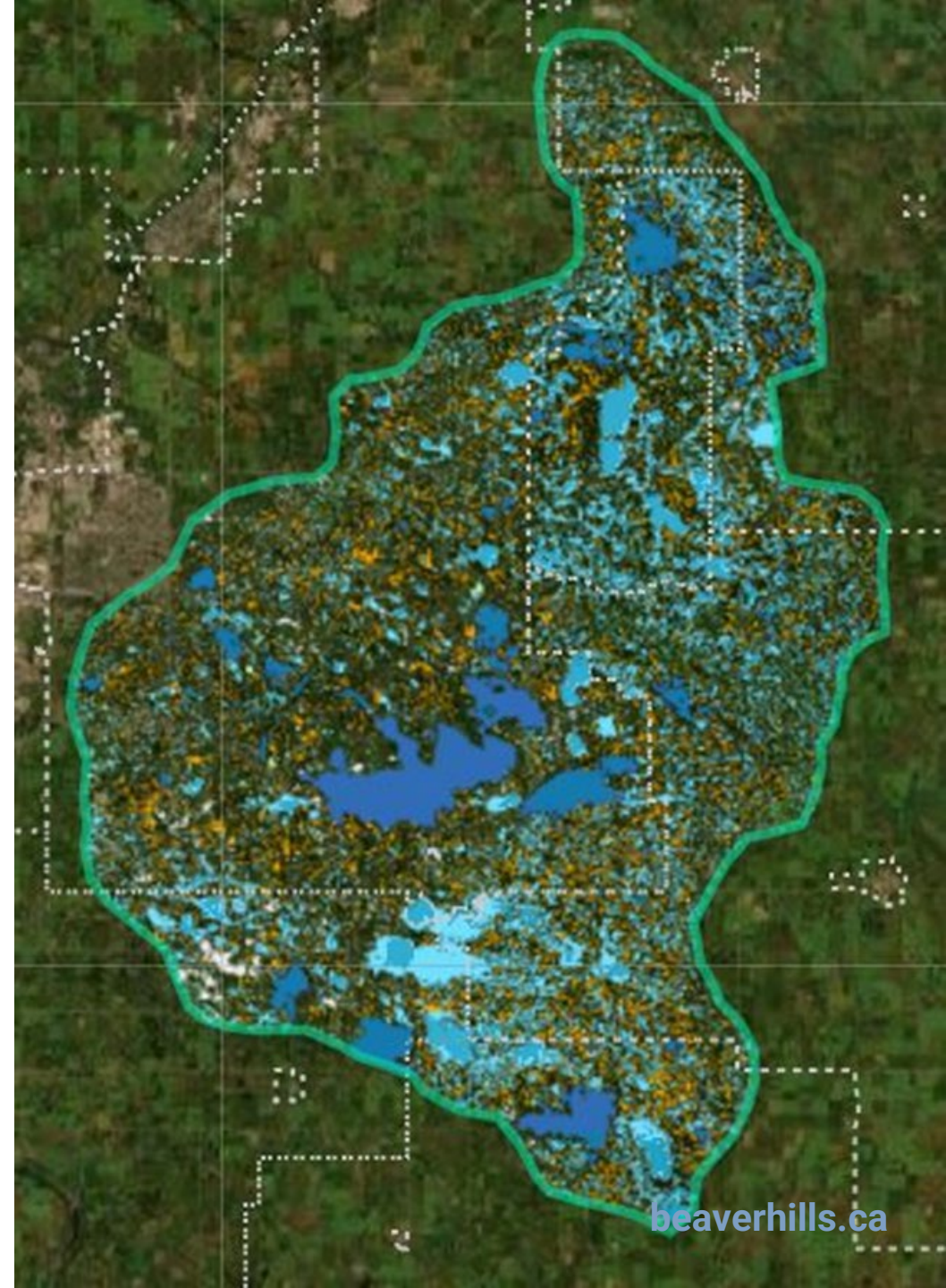
Leduc County

Prepared for: Beaver Hills Initiative

August 2018

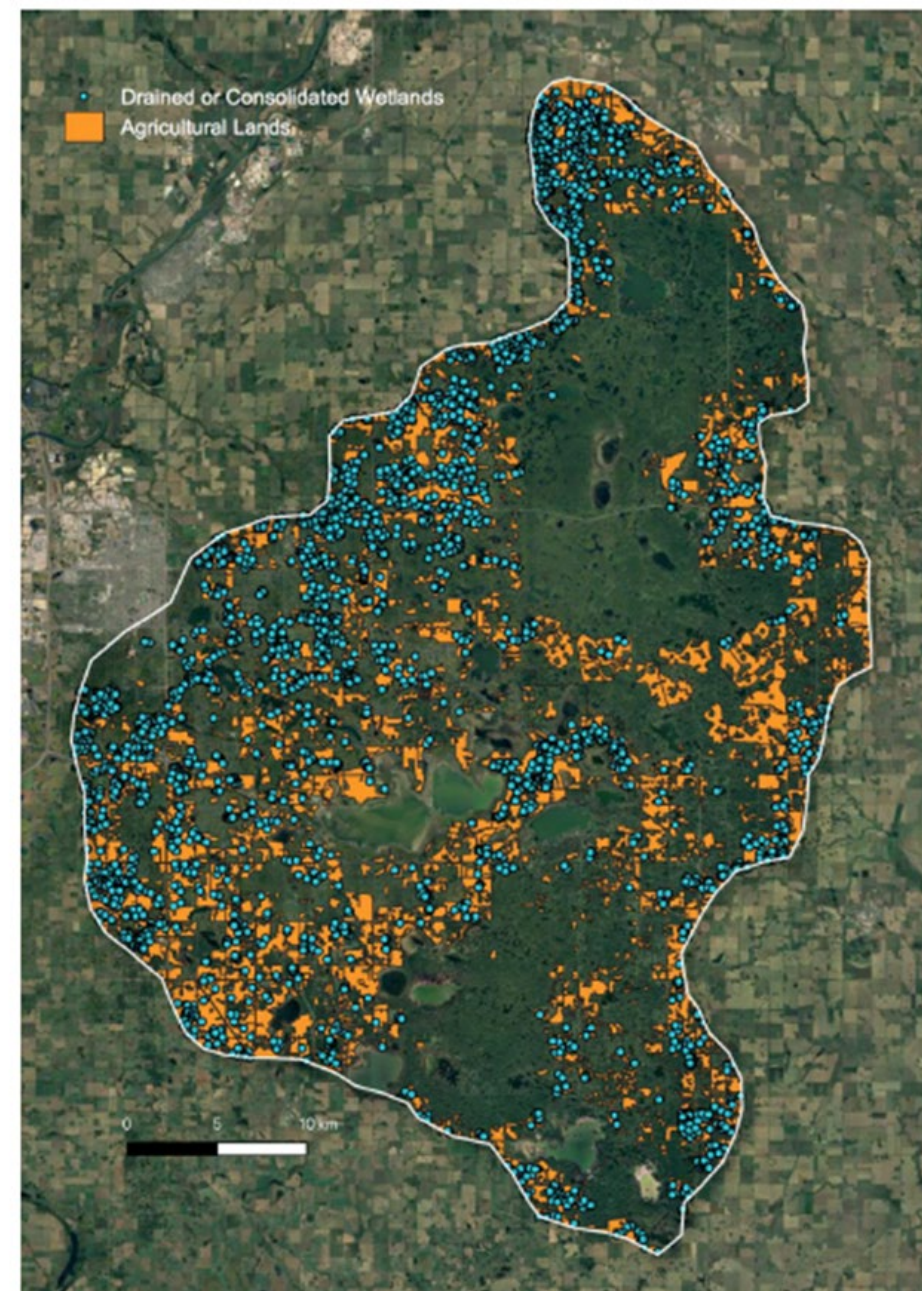
Surface Water Planning

- Surface Water Conservation & Stewardship
 - > 53,000 wetland objects identified (2020)
 - ~>53,104 ha
- Climate resiliency modeling predicting shifts in precipitation timing and temperature regime
- Emerging Community of Practice for management options



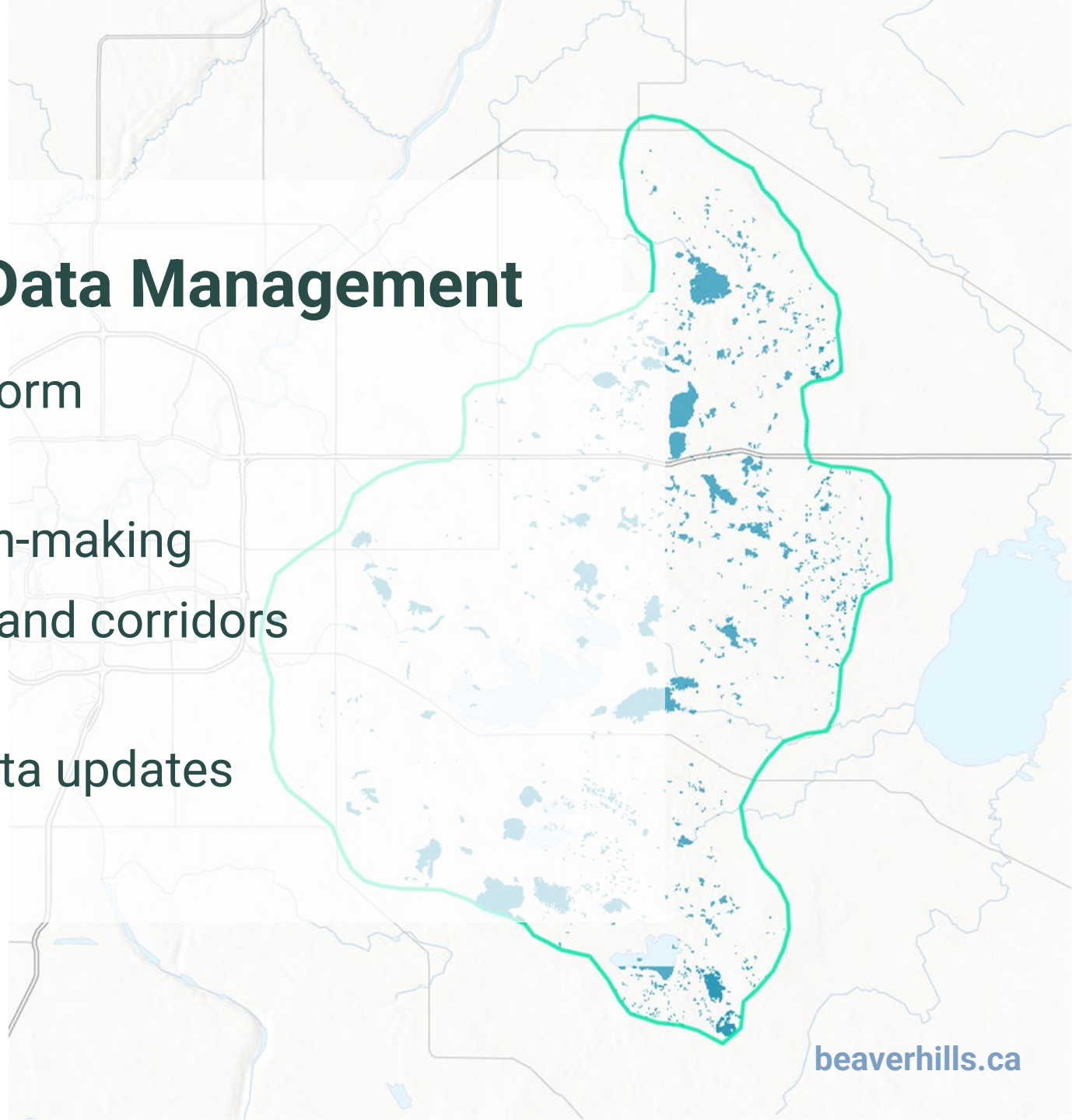
Surface Water Planning

- ~3,672 drained or consolidated wetlands identified (2020)
- Majority are located on private lands
- Directly linked to engagement with private landowners
- Launch a Community of Practice to support surface water management in the Biosphere



Conservation Planning: Data Management

- ~50 data layers in ArcGIS platform
- Online map viewer
- Supports planning and decision-making
- Applied research; connectivity and corridors
- Supporting partner needs
- Shared access and ongoing data updates





Tourism Directory

Experience the distinctive character, ecology and history of the Beaver Hills with these places to stay and things to do.

Submit a Listing →

Search

Places to Stay

Things to Do

Bed & Breakfasts

Campgrounds

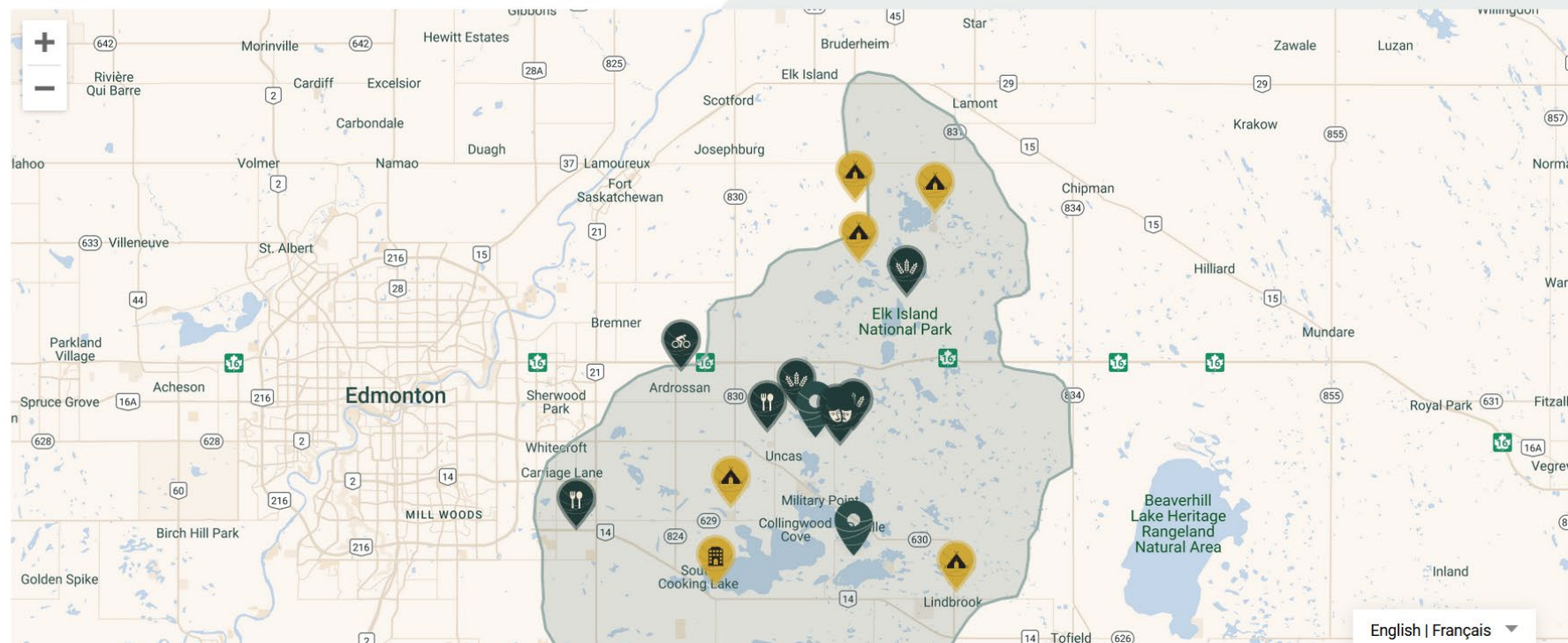
Guest Ranches & Farms

Hotels, Motels & Inns

Lodges & Cabins

RV Park

Site Services and Activities



Invasive Plant Community of Practice

- Private and public lands
- Multi-agency participation
- Knowledge sharing specific to invasive plant management
- Webinars and field day sessions
- Coordination of management actions
- Cross-jurisdictional programming
- Landowner and land manager focused



Human Wildlife Co-Existence

- Living with Wildlife Campaign
- Balance needs of humans and wildlife
- Focus on:
 - Mitigating conflicts and strategies for co-existence
 - Enhanced public awareness
 - Stakeholder relations and engagement
 - Sustainable programming

The Biosphere is:

- ✓ An unmistakable and special Alberta landscape in your backyard
- ✓ One of only 19 Canadian Biospheres
- ✓ A learning place for sustainable development
- ✓ A model for a sustainable and regional approach to land management
- ✓ Communities living and working in harmony with nature



Beaver Hills
BIOSPHERE

Living and working in harmony with
nature to inspire a positive future.