



## **1: Department services**

### **1.1: Our mission**

*Utilities is dedicated to operating and managing Leduc County's utility infrastructure and in delivering utility services that meet customer needs.*

### **1.2: Service areas**

#### **Water distribution**

- Manages and maintains County-owned water infrastructure and services (storage and distribution):
  - Residential, commercial and industrial metered water sales
  - Bulk water sales
  - Customer service requests

#### **Wastewater collection system**

- Manage and maintain County-owned wastewater infrastructure and services (collection and treatment):
  - Residential, commercial and industrial wastewater collection
  - Bulk wastewater collection
  - Wastewater treatment (hamlets)
  - Customer service requests

#### **Waste management**

- Manage and maintain County-owned waste management facilities and services.
- Provides waste management and recycling programs for County residents.
- Manages door to door waste and recycling services.

#### **Stormwater management**

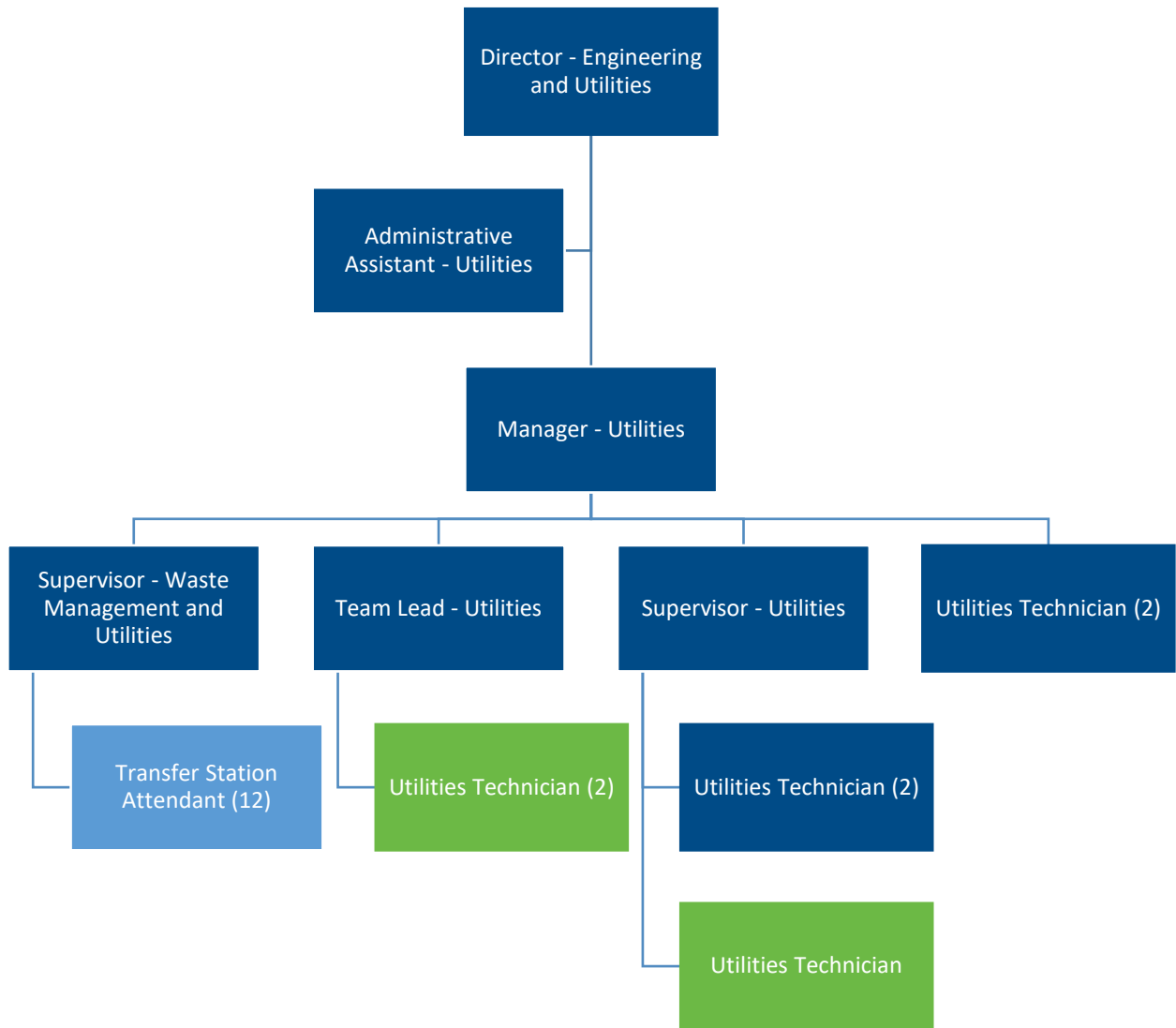
- In conjunction with Engineering, Road Operations and Agricultural Services, manage and maintain County-owned stormwater infrastructure and services.

#### **Contracted services**

Manage and operate the water and wastewater systems at the Edmonton International Airport (YEG).



### 1.3: Organizational chart



## 2: Strategic priorities

<b>Goal 1</b>	<b>Strategic priority – A robust economy</b> Contribute to the economic resilience of Leduc County.
<b>Goal 2</b>	<b>Strategic priority – Strong leadership</b> Continue to demonstrate leadership in regional initiatives and organizations.

## 3: Action plan

### Goal 1

Contribute to the economic resilience of Leduc County.

#### Strategy 1.1

Examine the sustainability of storm water infrastructure and its funding requirements.

<b>Actions</b>	<b>Target dates</b>	<b>Deliverables and/or key performance indicators</b>
Develop proposed stormwater management infrastructure budgets.	Q2 2025	Complete stormwater management budget.

### Goal 2

Continue to demonstrate leadership in regional initiatives and organizations.

#### Strategy 2.1

Continued participation in Edmonton Metropolitan Region Board working groups and collaboratives.

<b>Actions</b>	<b>Target dates</b>	<b>Deliverables and/or key performance indicators</b>
Participate in the Edmonton Metropolitan Region Board's Solid Waste Collaborative.	Q4 2025	Determine potential for regional collaboration for solid waste and recycling management.