



1: Department services

1.1: Our mission

Leading the way for people and business to thrive.

1.2: Service areas

Leadership and administration

- Develops strategic direction for Road Operations programs, projects and services.
- Provides leadership for the Road Operations department.
- Collaborates with other County departments to provide efficient delivery of services to residents.
- Monitors Road Operations programs, projects and services to deliver projects on time and on budget.
- Manages County road-use activities by residents and companies through:
 - road use agreements
 - road bans and road permitting
 - road closures

Operations

Maintains Leduc County's roadway network. Operations includes the budgets for the service areas of dust control, gravelling, pavement repair and maintenance, road maintenance and signage.

Gravel roads (1,726 km)

- Rural Roads Initiatives (shoulder pulls, miscellaneous spot repairs, major fill program, drainage and brushing improvements)
- annual gravelling
- summer and winter gravel road maintenance
- dust control
- culvert replacement/repair and minor drainage projects
- vegetation management within County rights-of-way (in coordination with Agricultural Services)
- repair, maintain and replace signage as needed

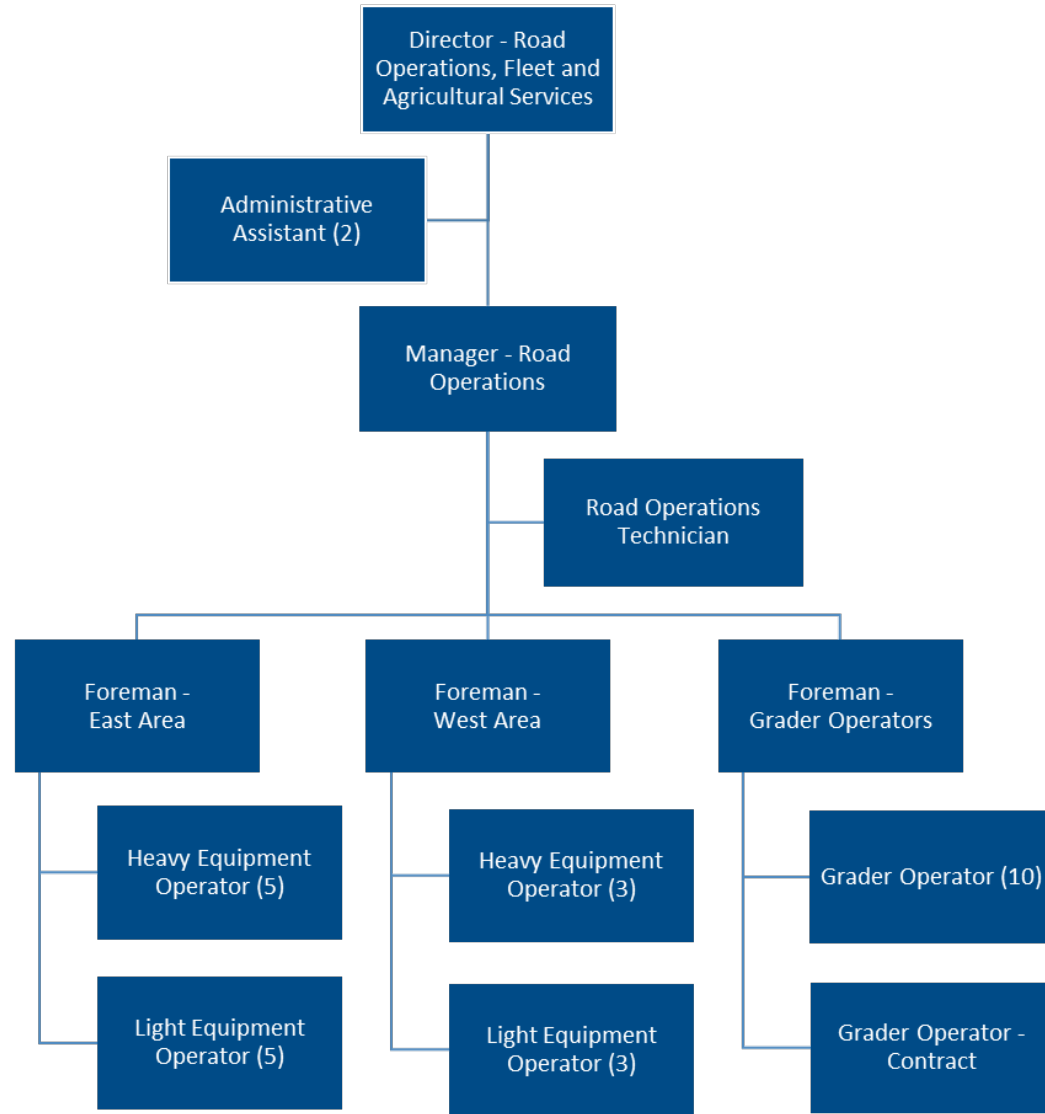
Asphalt surface roads (851 lane km)

- major asphalt repair
- summer maintenance (crack sealing, street sweeping, pothole/injection patching, line painting)
- winter maintenance (plowing, sanding, salting)
- vegetation management within County rights-of-way (in coordination with Agricultural Services)
- repair, maintain and replace signage as needed

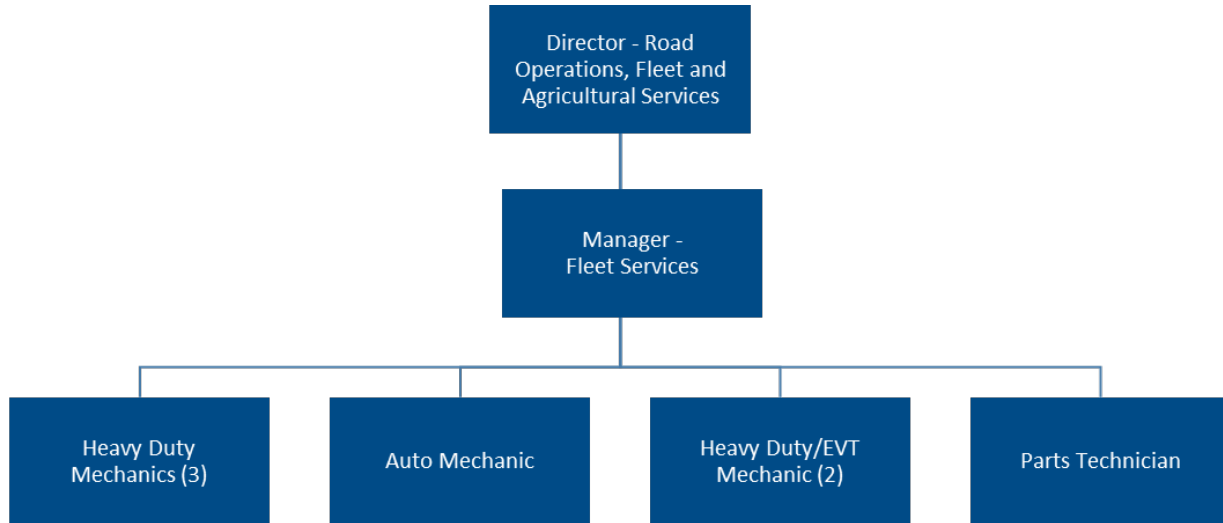
In conjunction with the facilities and equipment coordinator, manages and maintains Road Operation's fleet and facilities.



1.3: Organizational chart – Road Operations



1.4: Organizational chart – Fleet Services



2: Strategic and corporate priorities

Goal 1	Strategic priorities – Deep community connections and strong leadership Road Operations is committed to increasing citizen satisfaction with Leduc County’s municipal services and will incorporate actions in its operational plan in response to the feedback received in the 2023 Citizen Satisfaction Survey.
Goal 2	Strategic priority – A robust economy Create efficient transportation infrastructure that meets community needs.

3: Action plan

Goal 1

Road Operations is committed to increasing citizen satisfaction with Leduc County’s municipal services and will incorporate actions in its operational plan in response to the feedback received in the 2023 Citizen Satisfaction Survey.

Strategy 1.1

Review current department programs and processes to gain efficiencies.

Actions	Target dates	Deliverables and/or key performance indicators
Review the snow removal response times in country residential subdivisions.	Q2 2025	Provide findings report to Public Works Committee (PWC).
	Q2 2025	Determine if changes to levels of service are required and adjust policy, if required.
Undertake a bridge cleaning and minor maintenance program within Road Operations.	Q3 2025	Thirty-six of the 72 bridges will be cleaned and minor maintenance performed annually by Road Operations.
	Q3 2025	Report back to the Public Works Committee (PWC) annually on progress.

Undertake a roadside ditching and culvert cleaning/replacement program within Leduc County's Nisku Business Park annually	Q4 2025	Eight hundred metres of roadside ditching will be completed and 30 culverts within the Nisku Business Park will be cleaned with a hydrovac and inspected annually.
---	---------	--

Goal 2

Create efficient transportation infrastructure that meets community needs.

Strategy 2.1

Use the 2020 Gravel Road Strategy, 2018 Rural Roads Study, annual condition assessments and the Engineering department's 2022 Road Surface and Evaluation and Rating to guide decisions on gravel, asphalt and cold-mix road maintenance priorities.

Actions	Target dates	Deliverables and/or key performance indicators
Implement the seventh year of the Rural Roads Initiative (RRI), which focuses on improving gravel roads throughout the County, and increase public awareness of the program.	Q4 2025	Improve the gravel road network by completing 20 spot repairs, 12 km of shoulder pulls, 30 roadside drainage ditch improvements and 30 roadside brushing projects.
	Q3 2025	Share project status updates with the public throughout the summer and fall of 2025.
Complete the major asphalt and cold mix repair program.	Q4 2025	Complete roughly 1200 – 1400 m ² of major repairs on asphalt failures on main roads.
Complete last link program.	Q4 2025	Apply reclamite treated asphalt millings on the following roads: <ul style="list-style-type: none"> Range Road 250 north of Glen Park Road 800 linear meters. Range Road 243 south of Airport Road (to Clearwater Park) 420 linear metres.
	Q4 2025	Apply chip-seal and fog coating over the following roads that had sections of reclamite applied in 2024: <ul style="list-style-type: none"> Range Road 234 north of Airport Road (to Treasure Island Estates) 1,450 linear metres. Range Road 235 south of Airport Road 600 linear meters.
Complete the summer asphalt and cold mix maintenance program.	Q4 2025	Complete the street sweeping, line painting and crack sealing programs.