



# Family and Community Support Services

## 2025 Operational Plan



### 1: Department services

#### 1.1: Our mission

*Leading the way for people and business to thrive.*

#### 1.2: Service areas

##### Leadership and administration

- Leads partnership, strategic planning and key initiatives with regional partners and stakeholders.
- Provides strategic direction and leadership to the department.
- Aligns visioning with community needs and identified trends within the region.

##### Family and Community Support Services (FCSS) program

- Provides a multi-municipal program to serve the residents of Leduc County, Calmar, Thorsby and Warburg.
- Guided by five principles that are fundamental to program success: prevention, volunteerism, community development, local autonomy and accountability.
- Develops locally driven, preventive social initiatives to enhance the well-being of individuals, families and communities.
- Assists individuals and families to develop or enhance organizational skills, conflict resolution and problem-solving skills; communication skills, healthy relationship-building skills, friendship skills and positive self-esteem.
- Completes simple income tax returns for seniors, people with disabilities and families/individuals with low income.

##### Bridges FASD (Fetal Alcohol Spectrum Disorder)

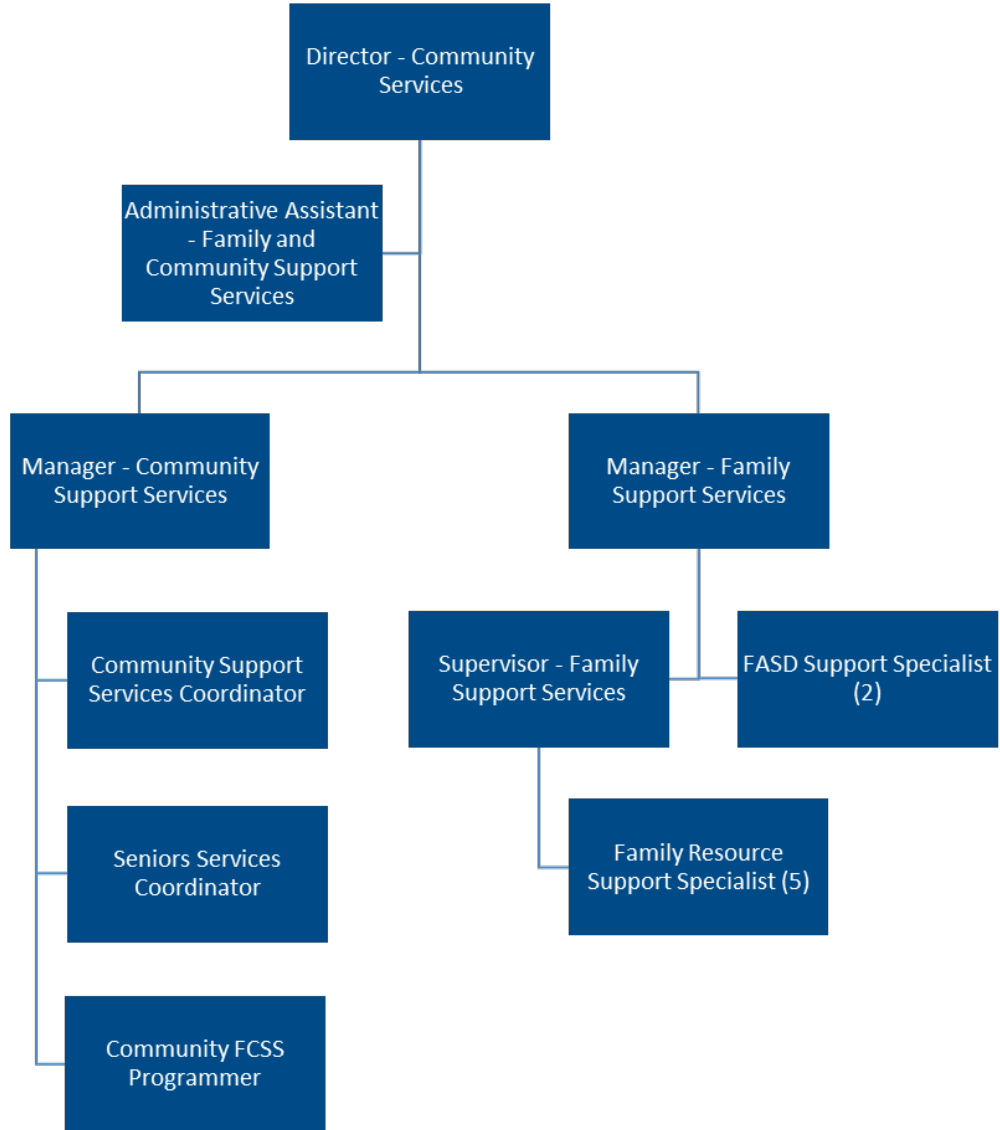
- Provides support to individuals who have been diagnosed or may have FASD.
- Assists individuals to reduce the impacts associated with social determinants of health.
- Provides community education and awareness related to the prevention of FASD.

##### Family Resource Network (FRN)

- Provides long-term support, mentorship, and advocacy for expecting parents, and/or parents with a baby less than one-year old, for families who due to varying factors are at risk.
- Provides information, referrals, parenting workshops such as Positive Discipline for Everyday Parenting, Circle of Security, Nobody's Perfect and Kids Have Stress Too. Participation is open to all community members.
- Provides in-home support for families who have children 1 to 18 years old. Shares information related to parenting and child development and connections to other supports in the community.



### 1.3: Organizational chart



### 3: Department goals

<b>Goal 1</b>	<b>Strategic priorities – Deep community connections.</b> Supporting parents with early childhood information, resources and supports.
<b>Goal 2</b>	<b>Strategic priority – Deep community connections.</b> Providing leadership in connecting agencies and community groups in social service provision.
<b>Goal 3</b>	<b>Strategic priority – Deep community connections.</b> Implement a program to support residents’ knowledge of sustainable food security options.
<b>Goal 4</b>	<b>Strategic priority – Deep community connections.</b> Improving access to information and resources.

## 4: Action plan

### Goal 1

Supporting parents with early childhood information, resources and supports.

#### Strategy 1.1

Parents will have access to opportunities to enhance child and youth development.

Actions	Target dates	Deliverables and/or key performance indicators
An early childhood resource guide will be prepared and shared with families. This guide will inform, educate and improve awareness of supports available to families in this region.	Q2 2025	A guide will be shared with Council.
	Q3 2025	The guide will be promoted to Leduc County families.
A school readiness initiative will be implemented to support families.	Q1 2025	A project plan will be developed that identifies outcomes, targets, and partnerships that will aid in improving school readiness for Leduc County children.
	Q4 2025	Year one programs and partnerships will be implemented. Examples include: <ul style="list-style-type: none"> <li>• Library reading programs for preschool children.</li> <li>• Partnerships with preschool providers to understand school readiness, domains and community challenges.</li> <li>• Events that support families with improved school readiness.</li> </ul>

### Goal 2

Providing leadership in connecting agencies and community groups in social service provision.

#### Strategy 2.1

Agencies and service providers will improve communication and sharing in support of residents.

Actions	Target dates	Deliverables and/or key performance indicators
Leduc County West Interagency meetings will be held with agencies and service providers that support Leduc County residents.	Q4 2025	Two interagency meetings will be held in 2025.

### Goal 3

Implement a program to support residents' knowledge of sustainable food security options.

#### Strategy 3.1

Residents will have access to low-cost cooking tips, strategies and resources.

Actions	Target dates	Deliverables and/or key performance indicators
In partnership with the Leduc and District Food Bank, programs will be offered across Leduc County to support residents' knowledge and	Q4 2025	Six cooking programs will be offered across the County for all ages. Examples include cooking

understanding of eating healthy on a limited budget.		for one, meal preparation for a young family and preservation and food recovery strategies.
--	--	---

**Goal 4**

Improving access to information and resources.

**Strategy 4.1**

Story board presentations will be used as a means of sharing information and informing residents of services.

<b>Actions</b>	<b>Target dates</b>	<b>Deliverables and/or key performance indicators</b>
Story boards will be developed to support residents in increasing knowledge and improving awareness of services and resources available.	Q4 2025	A story board will be developed that supports seniors in learning and understanding the resources available to them. This will support the Aging Well in Leduc County Toolkit.
	Q4 2025	A story board will be developed that increases resident awareness of living with FASD in Leduc County.

