

TARGET SECTOR ADVANTAGES

These are the industry sectors that are creating jobs and driving innovation.

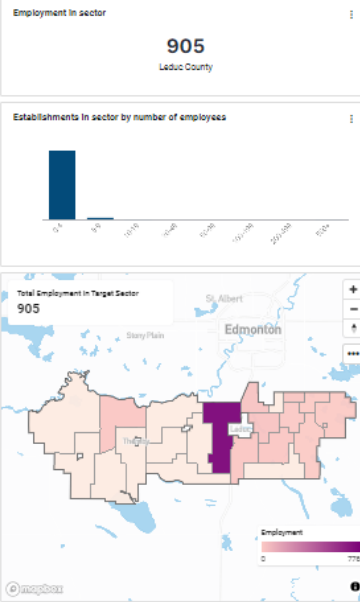
AGRICULTURE

ENERGY

FOOD PRODUCTION

MANUFACTURING

TRANSPORTATION AND LOGISTICS



Gateway to global markets

Leduc County's ideal location as a transportation hub ensures efficient access to domestic and global markets via air, road and rail. With proximity to major transportation routes, including YEG Edmonton International Airport, as well as direct connections to CN and CP Rail, businesses enjoy swift distribution and access to North American markets, making it an ideal choice for import and export opportunities.

LOGISTICS & ACCESSIBILITY ADVANTAGES

Explore the extensive networks that connect the region to the world.

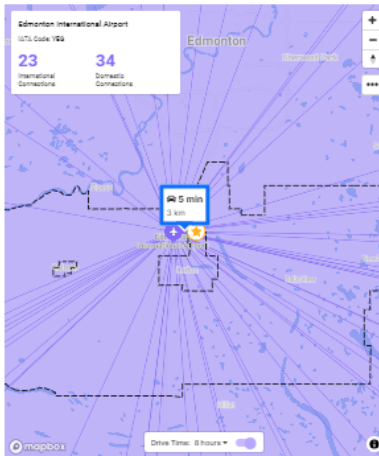
AIRPORT NETWORK

MAJOR ROAD NETWORK

SEA PORT NETWORK

RAIL AND FREIGHT NETWORK

BROADBAND NETWORK

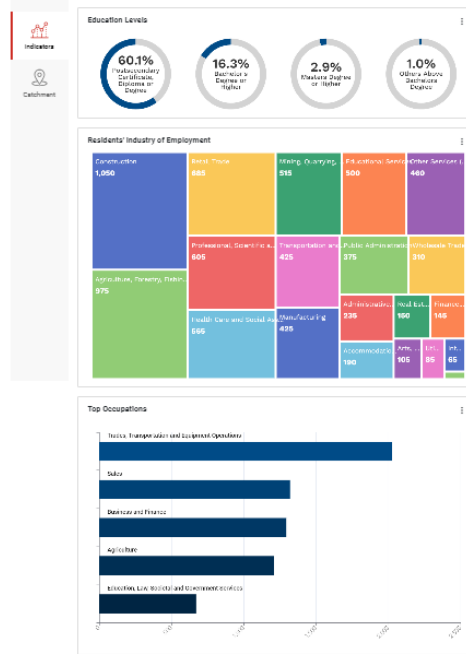


Access a large and skilled workforce

Boasting a population of more than 14,000 residents and situated in close proximity to the 1.4 million-strong Edmonton Metropolitan Region, Leduc County offers companies access to a large and diverse talent pool. The County's labor force is highly specialized in construction, business services, transportation and logistics, food processing, manufacturing and agricultural production. This diversity in skills and occupations equips employers with a competitive edge in expanding and strengthening their businesses.

Access a large and skilled workforce

Boasting a population of more than 14,000 residents and situated in close proximity to the 1.4 million-strong Edmonton Metropolitan Region, Leduc County offers companies access to a large and diverse talent pool. The County's labor force is highly specialized in construction, business services, transportation and logistics, food processing, manufacturing and agricultural production. This diversity in skills and occupations equips employers with a competitive edge in expanding and strengthening their businesses.



Tap into a thriving talent pipeline

Leduc County provides access to a thriving talent pipeline, encompassing more than 119,000 undergraduate students attending universities and colleges within a four-hour radius. This includes 18,300 in business, 11,100 in engineering, 7,000 in physical and life sciences and 5,000 in mathematics and computer science. Home to esteemed institutions such as the University of Alberta and NAIT, the County ensures a consistent supply of highly educated graduates for businesses.

TALENT PIPELINE ADVANTAGES

Explore the extensive network of universities and colleges that drive workforce supply and innovation in the region.

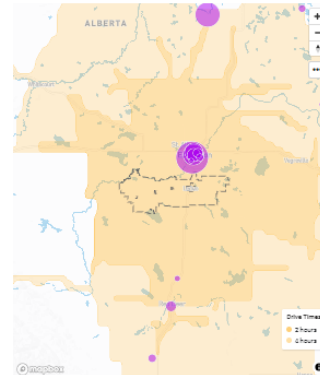
ALL PROGRAMS 185.1K #students

BUSINESS, MANAGEMENT AND PUBLIC ADMINISTRATION 31.5K #students

HUMANITIES 30.5K #students

HEALTH AND RELATED FIELDS 27.9K #students

SOCIAL AND BEHAVIOURAL SCIENCES, AND 24.8K #students



Discover your ideal business location

Explore the properties available for sale or lease in Leduc County today and join a vibrant community that's ready to welcome and support your growth.

Commercial Properties

Search multiple property listing services to find a space for sale or lease in our community.

For Sale

Space Type

Min Price

Max Price

See result from

Realtor.ca

SpaceList

Economic prosperity and family appeal

In Leduc County, you'll find a vibrant economy and a welcoming atmosphere for families. With higher median household incomes and a larger percentage of young residents compared to the Edmonton region, it's a family-friendly haven. An increasingly diverse range of industries such as construction, oil and gas support, metal fabrication and transportation fuel Leduc County's economy, making it an ideal destination for those seeking family values and economic opportunities.

MARKET ADVANTAGES

Local Consumers

Accessible Local Consumers

Assess your target consumers with the criteria below

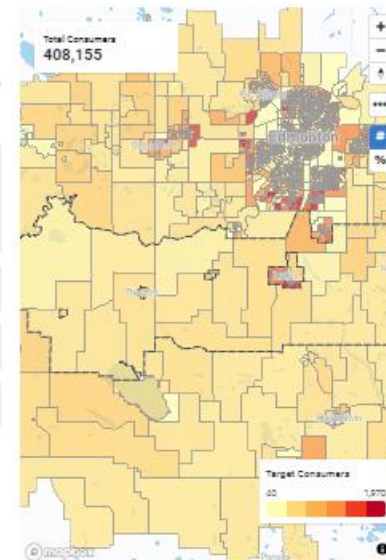
Individual Income

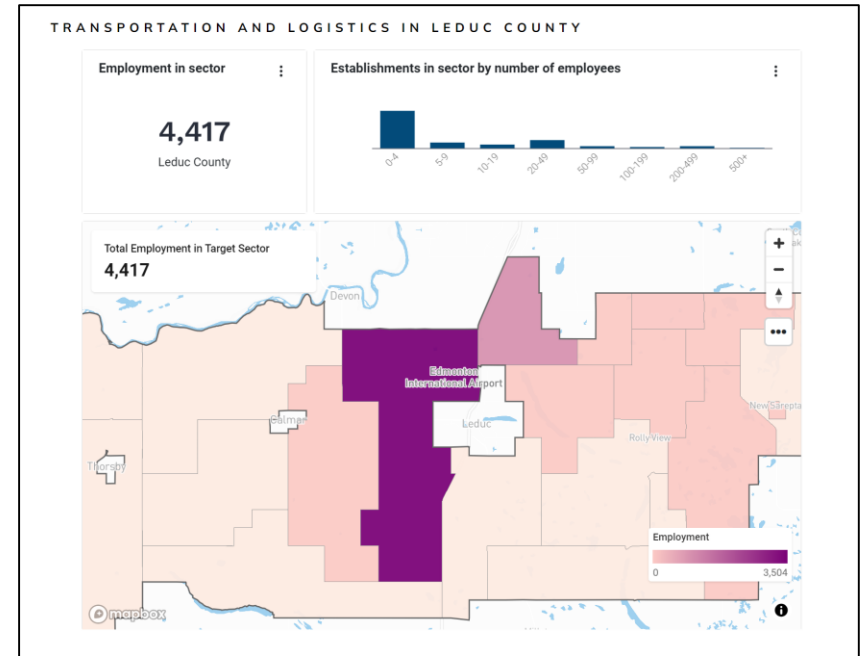
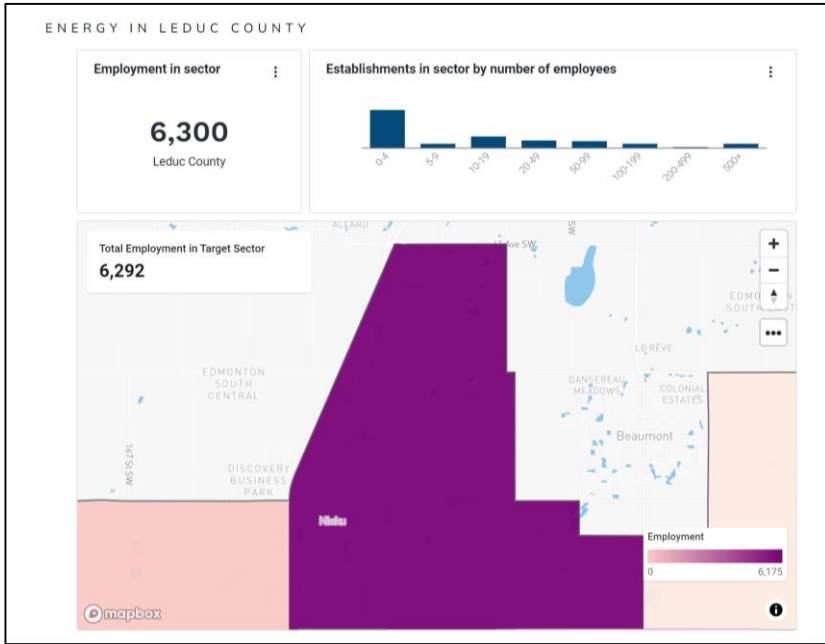
\$30,000 - \$70,000

Individual age

Household income

Household type





Business and Entrepreneur Centre

The BEC is our platform and hub facility for nurturing new and diverse economic growth in the region.



Key sectors

We've identified five key sectors poised for growth: agriculture, energy services, food processing, manufacturing and transportation and logistics.



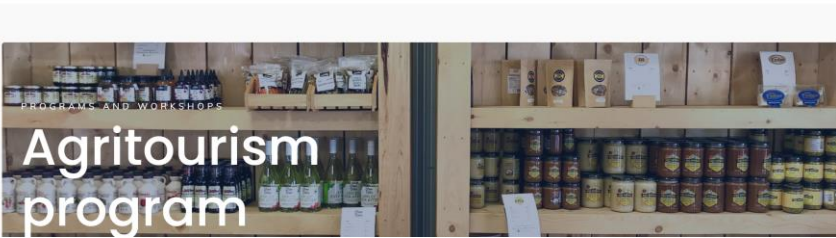
What we do

Our Economic Development team provides a variety of supports and can connect you with the tools and resources you need to help your business succeed.



Why Leduc County

Leduc County offers a competitive tax rate, convenient location and amenities, easy market access, a global talent pool and much more.



Agritourism program

Taxes and fees

Leduc County has the lowest tax rates in the Edmonton Metropolitan Region. The 2024 non-residential mill rate in Leduc County is 10.25 for every \$1,000 of assessment.

2024 non-residential mill rate comparison

Municipality	2024 mill rate	2024 tax per \$1 million assessment
Leduc County	10.25	\$10,250
Parkland County	12.88	\$12,882
City of Leduc	12.97	\$12,972
City of Beaumont	13.20	\$13,200
Town of Devon	13.53	\$13,539
City of Fort Saskatchewan	13.61	\$13,613
Strathcona County	14.24	\$14,240
Sturgeon County	14.64	\$14,643
Town of Calmar	16.78	\$16,786
City of Camrose	17.70	\$17,700
City of Edmonton	26.46	\$26,463

Investment map (Nisku)
Nisku Business Park Utilities and Services

Legend

Land Use Zoning

- AG - Agricultural
- AG-CK - Transitional
- BP - Business Park
- CI - Commercial
- CH - Highway Commercial
- CO - Service Commercial
- CC - Direct Control
- CP - General Power Project Overlay
- SAK - Industrial-Agricultural-Resource
- IB - Industrial Business
- IND - Industrial
- INS - Institutional
- IS - Institutional Reserve
- LI - Light Industrial
- LW - Lake Watershed
- MS - Municipal Boundary
- NSRV - North Saskatchewan River Valley
- PR - General Recreation
- Residence
- Pond
- RA - Arroyo Residential
- RC - Country Residential
- RDM - Rural Centre Mixed District
- RE - Estate Residential
- RMF - Residential Multi-Family
- RMR - Residential Home Residential
- RMCC - ModernismCourt
- RR - Resort Residential
- RU1 - Residential Urban District 1
- RU2 - Residential Urban District 2
- RU3 - Residential Urban District 3
- UC1 - Urban Commercial 1
- UC2 - Urban Commercial 2
- UR - Urban Reserve
- WCC - Wizard Lake Central
- WLW - Wizard Lake West
- WLWCC - Wizard Lake Watershed / Conjuging Creek

LEDUC Transit Route

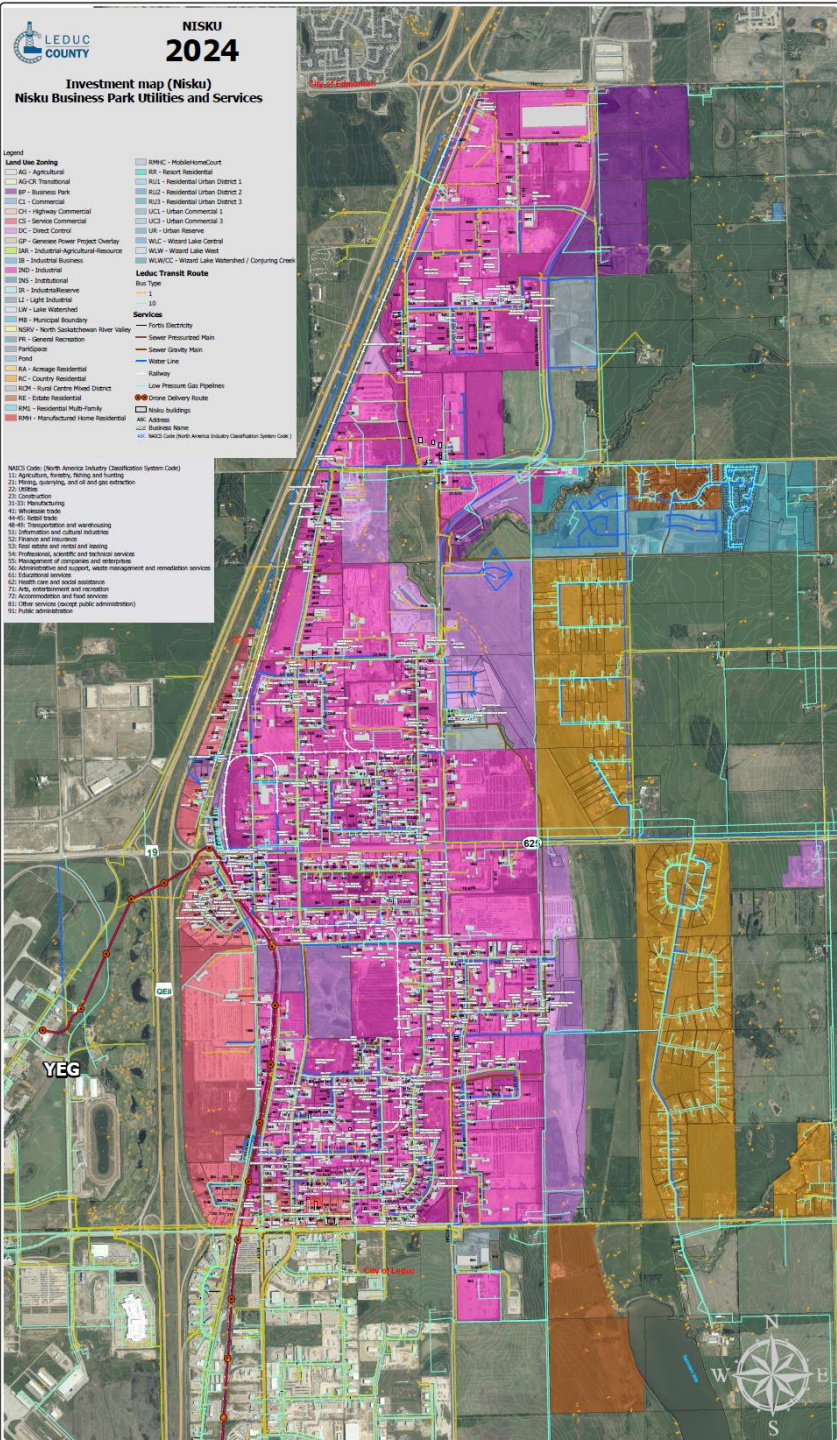
Bus Type

- 1
- 10

Services

- Fortis Electricity
- sewer Pressure Main
- sewer Gravity Main
- Water Line
- Railway
- Low Pressure Gas Pipelines
- Crane Delivery Route
- Nisku buildings
- AIC Address
- Business Name
- MACS Code (North America Industry Classification System Code)

- MACS Code: (North America Industry Classification System Code)**
- 21: Agriculture, Forestry, Fishing and Hunting
 - 22: Mining, Quarrying, and oil and gas extraction
 - 23: Utilities
 - 24: Construction
 - 25: Manufacturing
 - 40: Wholesale trade
 - 44-45: Retail trade
 - 48-49: Transportation and warehousing
 - 51: Information and cultural industries
 - 52: Finance and insurance
 - 53: Real estate and rental and leasing
 - 54: Professional, scientific, and technical services
 - 55: Administrative, support, waste management and remediation services
 - 56: Administrative and support, waste management and remediation services
 - 62: Health care and social assistance
 - 72: Arts, entertainment and recreation
 - 73: Accommodation and food services
 - 81: Other services (except public administration)
 - 91: Public administration



YEG

City of Edmonton

City of Leduc



